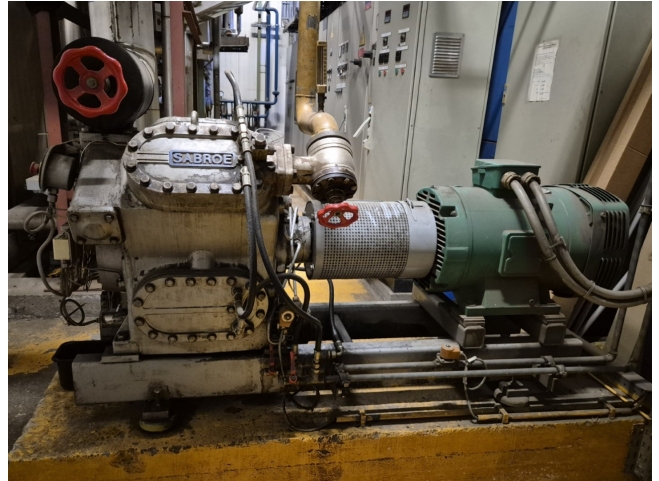


Sabroe SMC 104 L HP

Specifications

Marque	Sabroe
Le type	SMC 104 L HP
Réfrigérant	NH 3 (ammonia)
kW at +10°C/+40°C	361,2
kW at 0°C/+40°C	238,9
kW at -5°C/+40°C	190,1
kW at -10°C/+40°C	148,6
Électromoteur Specs	50/60 Hz - 55/63 kW - 1455/1755 RPM
Démarrage à vide	✓
Contrôle de capacité	✓
Sur le châssis en acier	✓
Interrupteurs de sécurité	✓
de pression	
Manomètres	✓
Voyant	✓
m ³ / h	276
Stock	1



Description

Used Sabroe SMC 104 L HP

Used Sabroe SMC 104 L HP reciprocating compressor on NH₃. Complete with a Leroy Somer PLS225MR-T electric motor - 50/60 Hz - 55/63 kW - 1455/1755 RPM, pressure and safety switches/gauges. The compressor has a displacement of 276 m³/h.

*Why choose for HOSBV? Were not only the largest used refrigeration specialist in Europe, but also, we deliver all equipment including an extensive test, warranty and industrial cleaning.

*Optional we can also perform a new paint job and arrange the logistics.

